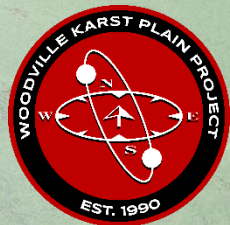


Chip's Hole Cave System SR267/US319 Proposal

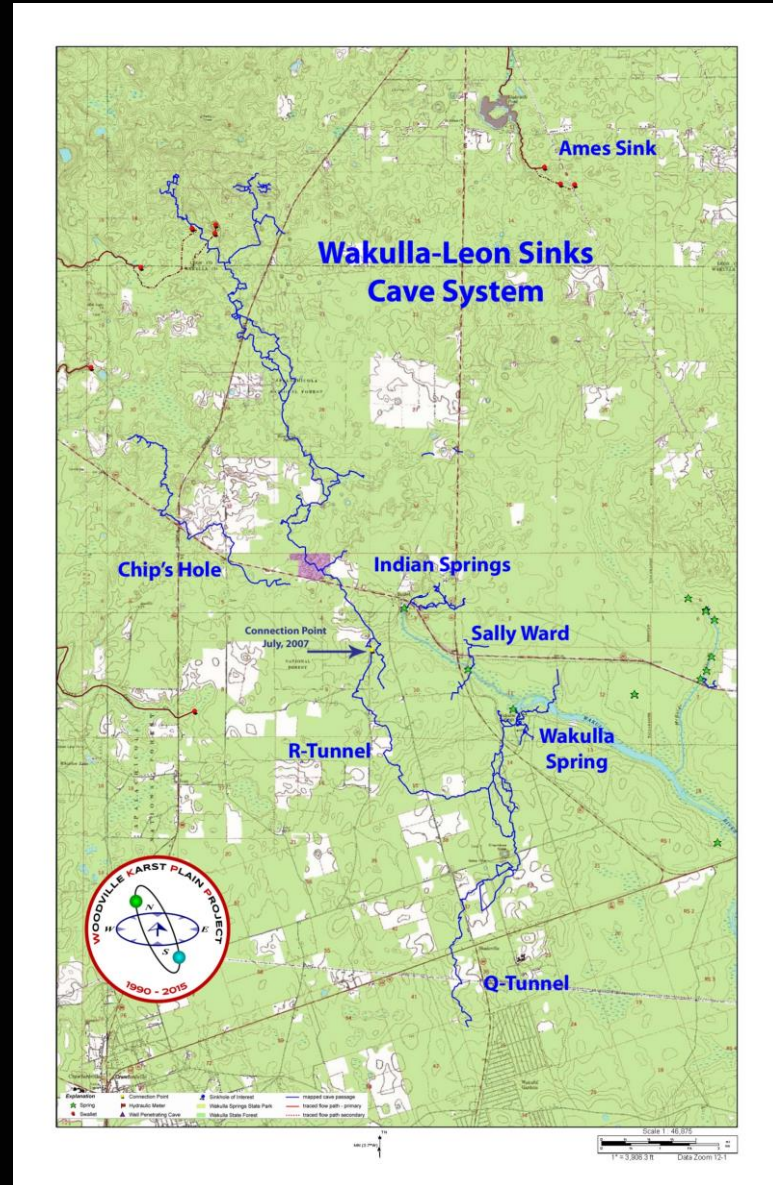
Friends of Wakulla Springs
January 5, 2022

Casey McKinlay
WKPP Project Director



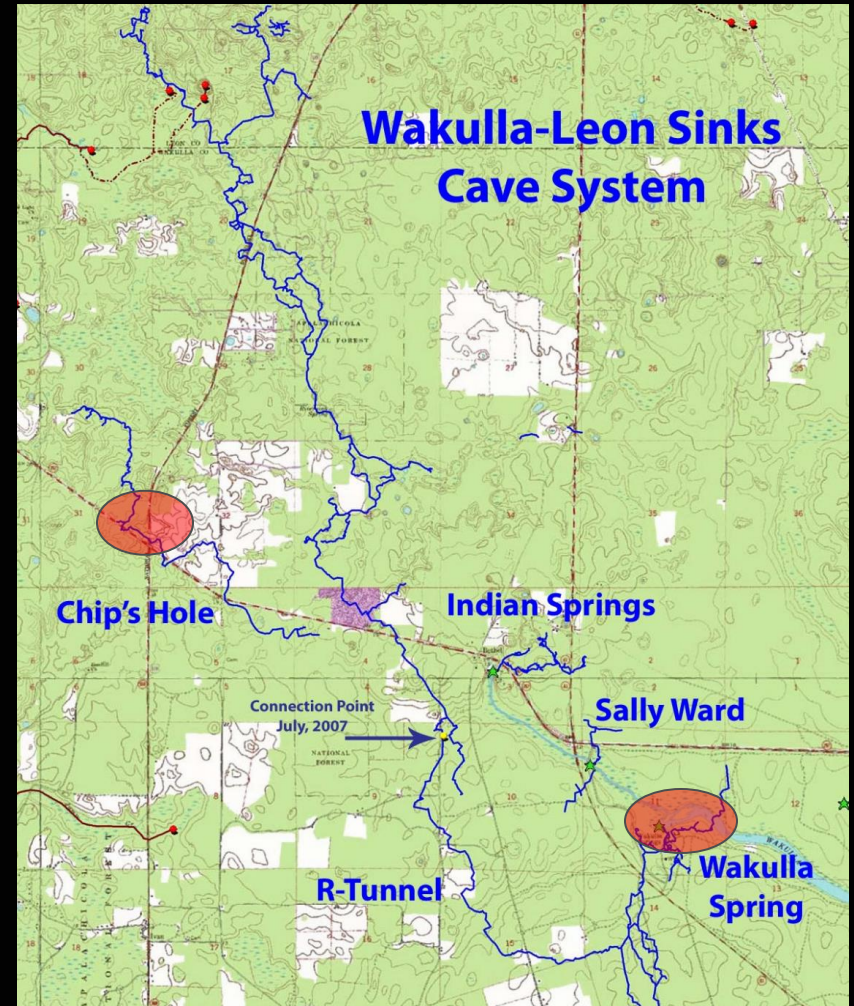
Woodville Karst Plain Cave Systems

- WKP
 - 450sq miles (1150sq km)
 - 45+ Miles (72km) of Mapped Cave Systems
 - WLS = 35 Miles
 - Chip's = 6+ Miles

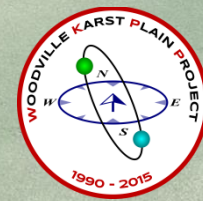


Woodville Karst Plain Cave Systems

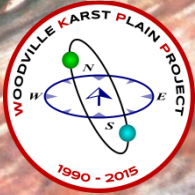
- Chip's Hole Cave System
 - 6+ Miles Explored
 - St Joe Hunting Lease
 - Known Entrances
 - Chip's Hole Sink (Chip Rivers)
 - Cal's Cave (Moody Cave)
 - First explored 1974
 - Dye Traced to Wakulla 2021
 - Est 8 Miles and 8 Days to Wakulla
 - WKPP Divers Working on Physical Connection



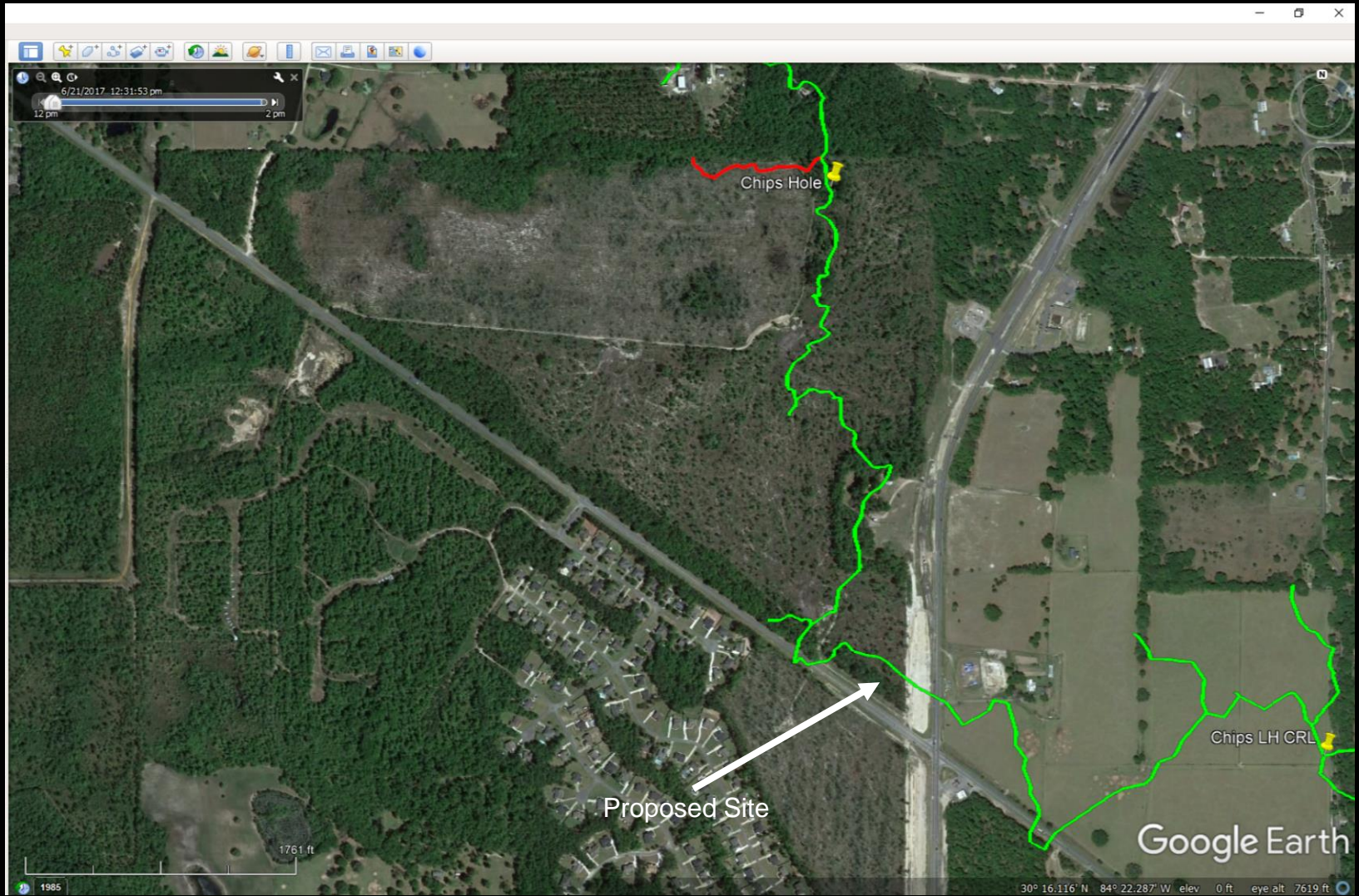
Chip's Hole Cave System Entrance



Cal's Cave System Entrance



Chip's Hole Cave System



DEPTH
181.1ft

ALTITUDE
10.9ft

298°

30 270 280 290 300 310 320 330

PITCH
-0.9°

ROLL
4.2°

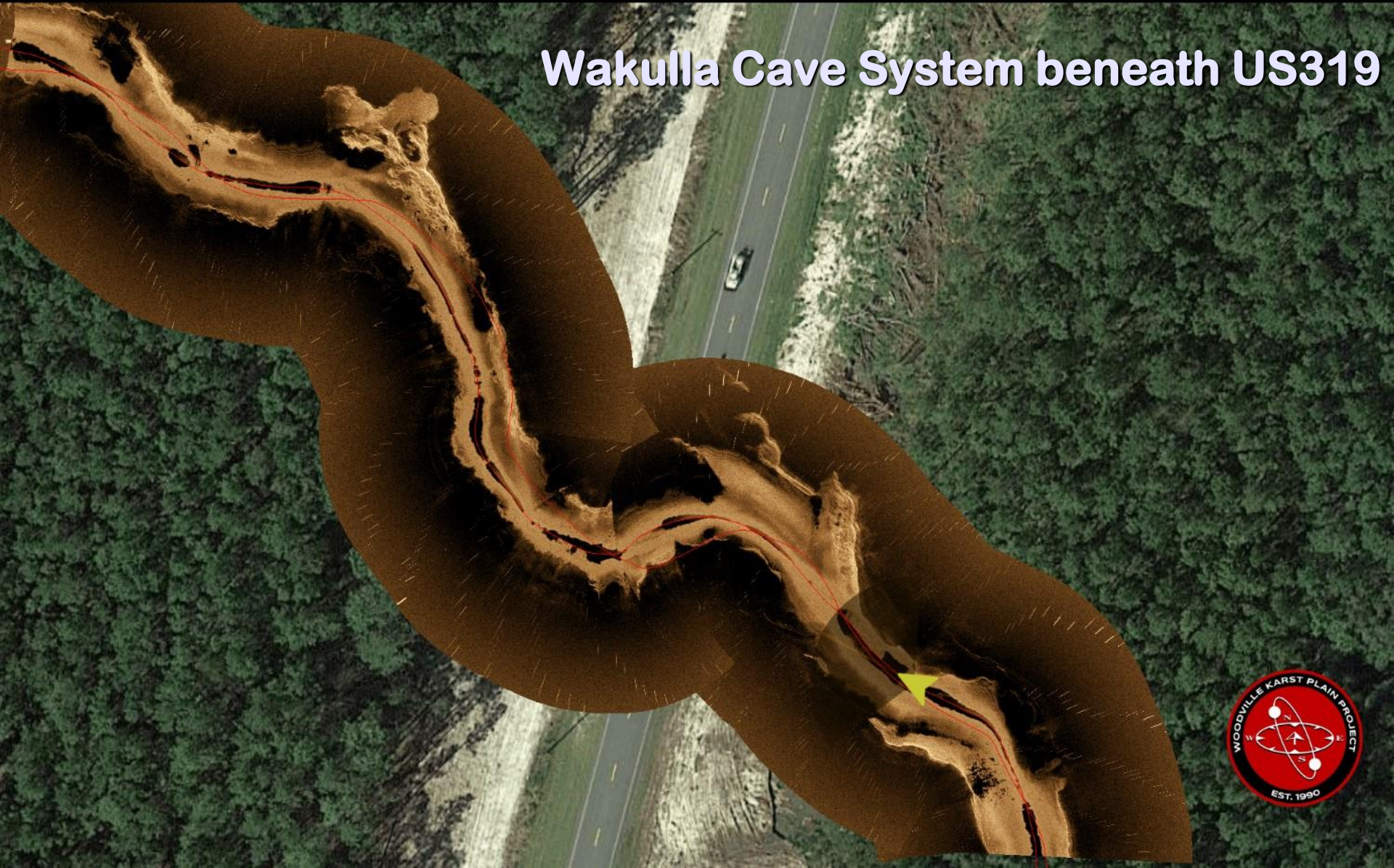
POSITION

30° 17' 40.895" N

84° 20' 58.867" W

T: 69.6°F S: 1.3kts

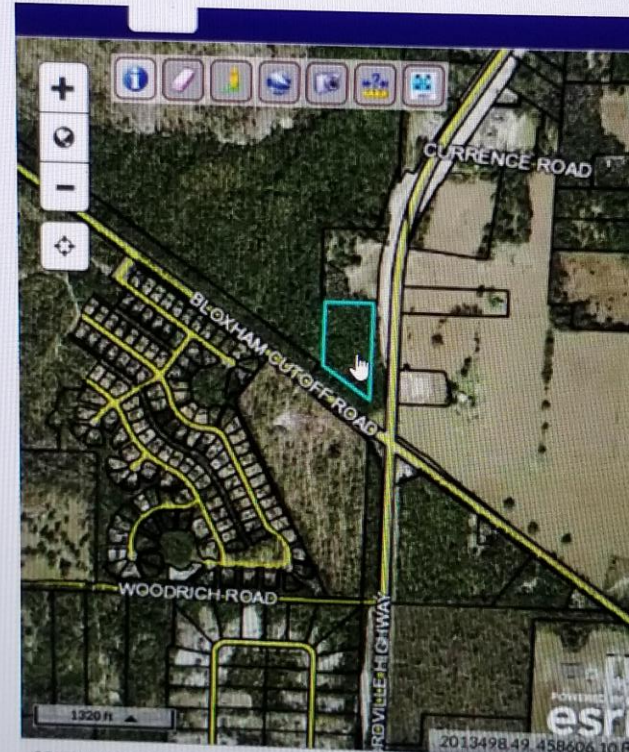
Wakulla Cave System beneath US319



SW Georgia Oil Proposal

- NW Corner SR267/US319
- Proposed location directly above cave system
- Cave System Depth – 100ft below the surface
- Cave system drains to Wakulla Springs – est 8 miles downstream – S-SE
- Est 8 day transit time to Wakulla Springs
- Threats from tank leakage and non-source point runoff

Proposed gas station NW corner 319/267



SOUTHWEST GEORGIA OIL
7.07 Acres

View: Report | Google Maps print in a new tab



WKPP

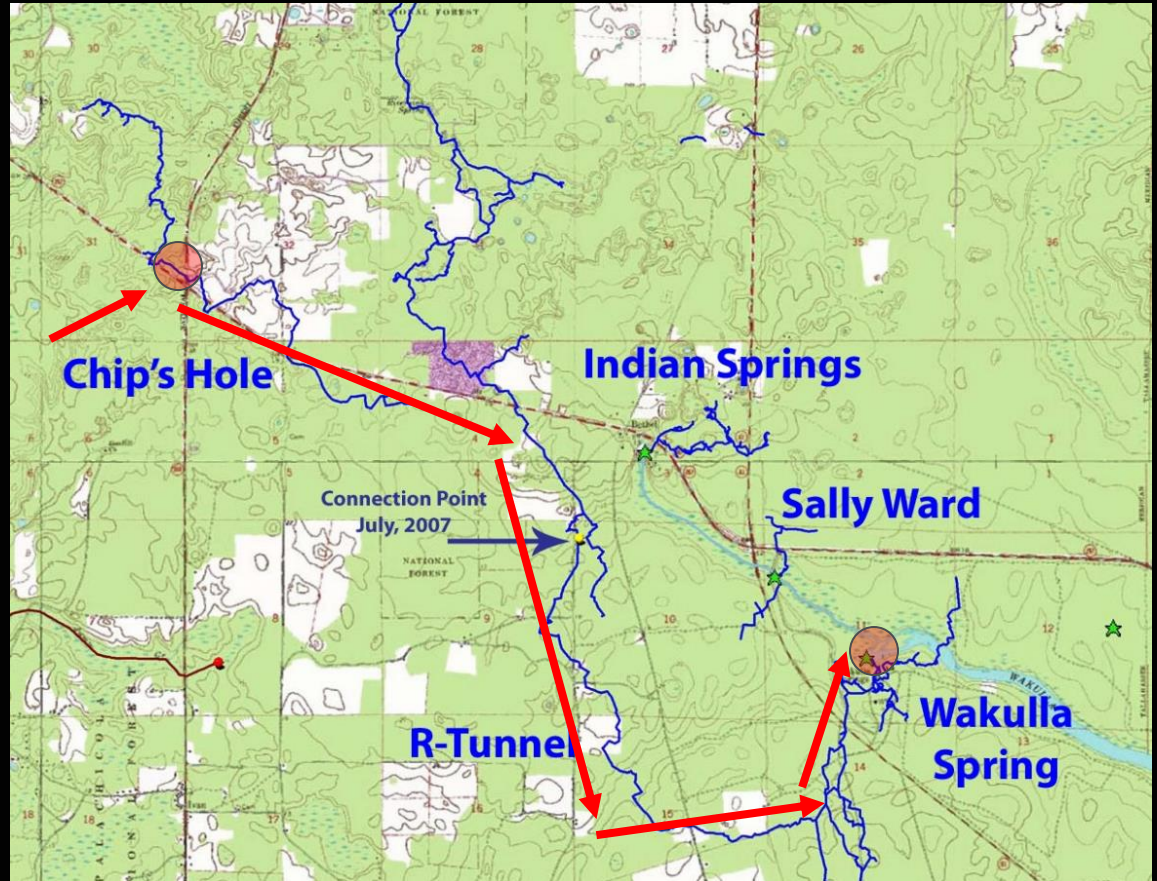
SW Georgia Oil Proposal

- NW Corner SR267/US319
- Proposed location directly above cave system
- Cave System Depth – 100ft below the surface
- Cave system drains to Wakulla Springs – est 8 miles downstream – S-SE
- Est 8 day transit time to Wakulla Springs
- Threats from tank leakage and non-source point runoff



Woodville Karst Plain Cave Systems

- Water travels downstream (S-SE) from Chip's Hole to Wakulla Springs



Woodville Karst Plain Cave Systems

- WKP
 - Dye trace – June 12, 2021
 - Dye released in Chip's Hole was detected in the Wakulla Springs Cave System less than 5 days later.
 - WKPP divers expect to map the connection in the coming months



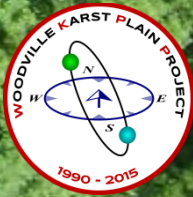
Wakulla Cave System Between Chip's Hole and Wakulla Springs



David W Rhea
PHOTOGRAPHY



Wakulla Springs



Woodville Karst Plain Project

www.wkpp.org

QUESTIONS?

